



# **Ink and Blood**

A Short Trail of Cthulhu Campaign by CthulhuBob Lovely

**Ink and Blood**  
**Thursday, March 15th 1934**

**Regarding Handouts**

Many handouts are not in the order in which they are needed, largely due to the author's lack of computer sophistication. Once they are clipped, it should be easy enough to organize them. Also, note that much of the correspondence has two versions, depending on when the Investigators find them.

**Character Creation**

At least one Investigator should be a police detective or something similar, and at least one associated with Professor Henry Armitage, the head librarian at Miskatonic University's Orne Library. The Investigators may or may not know one another prior to the campaign, at the Keeper's discretion.

Skills which may of particular use are Architecture, Assess Honesty, Bargain, Bureaucracy, Credit Rating, Cryptography, Evidence Collection, Flattery, Forensics, Law, Library Use, Locksmith, Medicine, Occult and Reassurance. It also may be useful, but is not necessary, for one or more of the Investigators to know Arabic, Latin and Spanish.

**Keeper's Background**

The antagonists in this campaign call themselves "The Eight." They are eight highly-placed individuals who have, among other resources, their elite status to shield them from reproach—and the prying Investigators. They are:

1. The Honorable John Mason, Associate Justice of the Massachusetts Supreme Judicial Court in Boston, which is composed of 1 Chief Justice and 6 Associate Justices.
2. Mayor Roman Bradley, of Beverly Massachusetts pop. 45,000.
3. Alfons Harte, Curator of the Metropolitan Museum of Art in Manhattan, New York City.
4. Sir Humphrey Amstead. Knight in London, England.
5. Luciana Lopez ("LL"), Head librarian at the Biblioteca Nacional de España (National Library of Spain) in Madrid, Spain.
6. Dr. Lewis Burnside, MD, Chief Psychiatrist at the San Francisco Psychiatric Hospital.
7. Father Dominic Lockwood, Priest of Saint Mary's Church in Toronto, Ontario Canada.

8. Lieutenant General Frederick Stapleton, Commander of Fort Sherman Army Base, Chicago, Illinois.

**The Hook:** Sir Humphrey Amstead and a few well-paid, hired thugs performed the murder and theft. They gained access to Professor Armitage's office via an unlocked back door of the library, finding and kidnaping the custodian, Amos Parker and stealing his keys. After Amstead murdered the Professor, his thugs packed the books and they hustled poor Parker out the back door and into a delivery van. They then drove him to the bank of the Miskatonic River, where Amstead cut his throat and dumped his body.

Various of The Eight have corresponded with Armitage over the years regarding rare, antique books, often of an occult nature, in efforts to expand their libraries.

Their current plan is to retreat to their own bases of operation, read the books to learn their secrets, then meet in six months, on Wednesday the 12th of September to exchange knowledge and possibly re-distribute the books.

Their meeting place is to be a mansion in a forested area by a lake on Pawtuckaway, New Hampshire. If this location is somehow compromised, they are to meet at a castle in Scotland, in a forested area overlooking the North Sea, just East of the town of Montrose.

**Secondary Story Arc:** The Eight are also seeking a magical crown and six magical emeralds approximately the size of a green pea. When the gems are properly mounted in the crown, it functions as per *The Crown of Command*.

**The Crown of Command:** The crown has two effects, and the wearer may spend the points it grants as they choose. Each use costs 1 Stability.

First, the wearer may attempt to *Dominate* another and give a simple command. If this succeeds, the target will perform this action to the best of their ability on their next turn only.

Stability Test Difficulty to cast 4 (3 with Intimidate). After the test to cast the spell, the caster makes a second Stability test against the target's current Stability, modified by -2 if the caster holds a piece of the target's hair, bloodstain, or other physical sample.

Secondly, the crown grants a point pool in Cthulhu Mythos, Languages, Occult, Theology, Assess Honesty and Intimidation. In the case of Languages, the crown only affects those already known.

The wearer has access to six discretionary pool points to spend using *Dominate* and/or any of these skills. Any points from the crown thus spent recover in twenty-four hours. This "recharge period" is in place regardless of who is or is not wearing the crown at any given time.

If the crown is sufficiently damaged, at the Keeper's discretion, its magical properties are no more, though the emeralds remain magical. They perform no function other than to act as a power source.

Any Investigator with Occult who examines the crown may spend 1 pont to recognize the crown is magical and confers knowledge and another to recognize it imparts mental control. If such an Investigator examines any of the emeralds, no spend is necessary to recognize they are magical, but no further information may be garnered. Until fully assembled, none of these items performs any function.

## Wednesday the 12th of September, 1934

Assuming both the Investigators and the remaining members of The Eight arrive at the mansion or castle, allow whatever bloodbath and/or other resolution seems appropriate. Keep in mind one ghoul or one byakhee is a force to be reckoned with.

The byakhee will only fight the Investigators if attacked, or Judge Mason orders one to. If the Investigators have Space Mead and feel like taking a journey, the byakhee will comply and take them to the Great Library of Celaeno. But that's a different story.

### The Adventure

**Opening Scene:** The Investigators are summoned by the Library secretary and front-desk librarian, Louise Meyers, to the Professor's office. He has been brutally murdered, slashed across the face and abdomen. Bill Smith, the Essex County Sheriff is on site when the Investigators arrive. He will cooperate with them and allow them full access to the scene, as he understands their association with the late Professor and that many weird things happen in and around Arkham.

The position of the Professor's body shows he was crawling in his last moments, toward his cane which lies nearby. The cane is blackthorn, the wood Irish shillelaghs are made of, with a round silver head. Also, the door into the Restricted Stacks stands open, with the key in the lock.

Once Sheriff Smith is satisfied he has gathered all the information he needs regarding the crime he leaves, offering the Investigators his contact information. As the Sheriff departs the medical examiner and his men also leave, carting Armitage's sheet-covered body on a gurney. The article regarding the professor's death is in the Arkham Advertiser newspaper the following morning, Friday the 16th. (See Handout #5)

William Smith  
Sheriff, Essex County  
Essex County Courthouse  
666 N. Peabody Ave.  
Arkham, Mass. Tel. Kite55 4729

**Sheriff Bill Smith**, 32, tall, well-built, white officer of the law: Athletics 6, Cop Talk 2, Driving 6, Evidence Collection 2, Firearms 8, Scuffling 4, Interrogation 2, Law 3, Assess Honesty 2, Sense Trouble 4, Health 12, Sanity 8, Stability 12.

.38 caliber revolver. Point Blank +3, Close +1, Near +1, Long n/a.

Examined, the Professor's cane proves to be a sword cane. If handled by an Investigator with Occult, a 1 point spend reveals it to be enchanted. The silver pommel is engraved with a symbol: a stylized five-pointed star in the center of which appears to be an open eye from which a flame emerges. (The symbol is an empowered Elder Sign, the sword therefore is magical. This weapon does an additional +1 damage to any Mythos creature. However, being only a sword

cane and not a full sword, it does not do the usual +1 damage a sword does.)

Looking in the Restricted Stacks Room, the Investigator acquainted with Armitage notices many of the books are missing.

The books remaining are:

Azathoth and Other Horrors, in English;  
Liber Ivonis fragment, in Latin;  
Ye Booke of Eibon, in archaic English, 2 copies;  
The Tuttle Celaeno Fragments, in English;  
Cthulhu in the Necronomicon, in English;  
Cthulhu in the Necronomicon, Holger Publication, in English;  
Cultes des Goules in Spanish;  
(Necronomicon) al-Azif: Ye Booke of The Arab, in archaic English, from the Dewart Bequest;  
(The) Old Ways Renewed, in English, 2 copies;  
(The) People of the Monolith, in English;  
(The) Pnakotic Manuscripts, in archaic English, from the Whateley Bequest;  
(The) Ponape Scriptures, Hoag Manuscript, in English;  
(The) Ponape Scriptures, Copeland's Annotated Verison, in English, and;  
Thaumaturgical Prodigies In The New England Canaan: Second Edition, English.

Professor Armitage has informed the Investigator(s) with whom he is acquainted that should anything like this occur, to read the contents of an envelope pasted to the underside of his top desk drawer. The envelope, unmarked, contains two sheets of paper. (See Handouts #1A and 1B) This is Armitage's handwritten list of books, indicating which are his greatest concerns:

Azathoth and Other Horrors, in English;  
✓Celaeno Fragments, in English;  
Celaeno Fragments, Tuttle's translation, in English;  
Cthulhu in the Necronomicon, in English;  
Cthulhu in the Necronomicon, Holger Publication, in English;  
✓Cultes des Goules, in French;  
Cultes des Goules in Spanish;  
✓Eltdown Shards, a few pottery shards, language unknown;  
✓Liber Ivonis fragment, in Latin;  
Liber Ivonis, in Latin;  
✓Necronomicon, in Latin;  
✓(Ye) Necronomicon, in archaic English;  
(Necronomicon) al-Azif: Ye Booke of The Arab, in archaic English, from the Dewart Bequest;  
(The) Old Ways Renewed, in English, 2 copies;  
(The) People of the Monolith, in English;  
(The) Pnakotic Manuscripts, in archaic English, from the Whateley Bequest;  
✓(The) Pnakotic Manuscripts, in Greek;

(The) Ponape Scriptures, Copeland's Annotated Verison, in English;  
(The) Ponape Scriptures, Hoag Manuscript, in English;  
Thaumaturgical Prodigies In The New England Canaan: Second Edition, in English;  
✓Thaumaturgical Prodigies In The New England Canaan, Annotated Copy, in English, and;  
Ye Booke of Eibon, in archaic English, 2 copies.

**Cooperative Library Staff:** Louise Meyers will point out two business cards on Professor Armitage's desk. She states these men are friends and colleagues of the Professor and that the Investigators may wish to speak to them. Provide them the business cards of Nathan Archibald Emerson and Alfred Ferguson Winthrop.

She also relates that recently a very distinguished seeming British man has visited twice. He has been here before as well, and is one of the people with whom Professor Armitage has corresponded regarding rare books. She does not know his name. The reason his recent visits stand out is that he was accompanied by two rather "shady-looking men."

If asked about her schedule, she tells the Investigators she opens the library at 6:00 am and works until 2:00 pm. A student, Frederick Gunnar, works the desk from Noon until 4:00 pm. The other full-time employee, Jacob Vanderson, works from 2:00 pm until 10:00 pm and closes up. The custodian Amos Parker, arrives at 9:00 pm and works until 5:00 am.

If interviewed, Gunnar and Vanderson will report they have noticed nothing odd, though Vanderson mentions Amos Parker did not show up for work that night. He further states that Amos is a very nice person and an excellent worker, so he was surprised by his absence. However, he did not feel it was cause for alarm. He also mentions that the Professor often works late into the night. All three of these people are entirely innocent.

The rest of the office is unremarkable. However, on Armitage's desk, between two bookends in the form of The Thinking Man, are a dictionary and a thesaurus bracketing a copy of William R. Bradshaw's 1892 science-fiction novel The Goddess of Atvatabar. An Investigator with a point pool in any of History, Library Use or Occult knows this novel is based upon a theory put forth by Edmond Halley in 1692 that the Earth is hollow and contains an inner world.

If any Investigator spends 1 point in Evidence Collection, or if this book is specifically opened, it proves to be hollow and contains Handouts #2A, #2B and #3 and the business card for Roman Bradley.

If the Investigators ask Louise about the name "Admundson," she tells them it must be Professor Thomas Admundson of Harvard University.

There is nothing else to find here.

**Louise Myers**, 40, Short, slender, erudite, white secretary: Accounting 1, Art History 1, History 2, French 1, German 1, Library Use 2, Occult 1, Assess Honesty 2, Bureaucracy 2, Flattery 1, Interrogation 1, Intimidation 1, Oral History 2, Reassurance 1, Art 1, Locksmith 2, First Aid 1, Sense Trouble 1, Health 8, Sanity 8, Stability 12.

**Body found in Miskatonic River:** On Thursday the 17th, the morning Arkham Advertiser newspaper includes an article relaying that the body of a man identified as Amos Parker, employed as a custodian at Miskatonic University, was found in the Miskatonic River late the

previous evening. As long as the Investigators are anywhere in New England, the Advertiser will be available and the article can also appear in other regional newspapers.

If the Investigators contact Sheriff Smith regarding this, he will inform them Mr. Parker's throat was slashed, and that he had been beaten, bound and gagged prior to his death. (See Handout #6)

"Yesterday evening, the body of Amos Parker, a custodian at Miskatonic University's Orne Library, was found washed up on the bank of the Miskatonic River. Essex County Sheriff William Smith told this reporter foul play was involved.

Services will be held Sunday the 20th at First Baptist Church."

**Forthcoming Criminals:** If the Investigators have any street connections, a 1 point spend in Cop Talk, Interrogation, Intimidation or Streetwise will provide information from Tony Willard, a small-time thief. He will inform the Investigators that Glen Pope and Frank Garret were recently hired by a guy with a strong accent, probably English.

Tony is certain the job was the College heist and murders. He is afraid of Pope and Garret, but will give the address of the house they are using as a hideout. 220 Oak St, in Arkham.

If the Investigators do not yet have the above information, Sheriff Smith will contact them on the afternoon of Thursday the 17th and inform them he has captured two suspects, long-term violent criminals Glen Pope and Frank Garret.

**Pope and Garret,** Athletics 5, Driving 5, Fleeing 5, Scuffling 10, Weapons, Heath 12  
Small club, damage modifier -1.

If captured, Pope and Garret will state they were hired by an English guy who said he was a Knight, not that they care, to help him steal some books from the college library. They admit to breaking in, kidnaping "the colored guy," and stealing the books, but claim (truthfully) the English guy did both killings, which they found a little shocking. The English guy paid them twenty dollars each. (This is app. \$366.00 in 2017 money.)

**Emerson's Rare Books:** Nathan Emerson is a bit stiff and speaks in a monotone. He is not unpleasant, but talking to him feels a little like talking to a lizard. When he has nothing to say he says nothing, causing silences that may be uncomfortable to others.

Emerson is friends and colleagues with "Henry" and laments his loss, dryly. He has been visited by an Englishman seeking rare occult books. If the Investigators do not already have it, he produces the business card for Sir. Humphrey Amstead.

Emerson has many books, and quite a few are of occult nature. None are Mythos tomes.

**Dr. Nathan Archibald Emerson PhD,** 53, white-haired, white, dry but knowledgeable seller of rare books. Accounting 1, Anthropology 1, Art History 1, Cthulhu Mythos 1, Credit Rating 4, Cryptography 2, History 2, Arabic 1, Cantonese 1, French 1, German 1, Hebrew 1, Italian 1, Russian 1, Library Use 3, Occult 2, Theology 1, Assess Honesty 1, Bargain 1, Credit

Rating 4, Oral History 2, Astronomy 1, Preparedness 1, Health 6, Sanity 8, Stability 10.  
Spells: Brew Space Mead.

**Arkham Cultural and Historical Museum:** With a shock of white hair, curator Alfred Ferguson Winthrop, M.S. is pleasant, engaging, a little crazy and confined to a wheelchair. Winthrop is friends and colleagues with “Henry” and laments his loss, but can not report noticing any suspicious persons.

The museum is filled with all sort of interesting items and information, mostly relating to local history, including the University. If asked about items of an occult nature, he will lead them to a glass display case.

In this case is a very well-sculpted, eight-inch tall statuette of green jade with gold striations, of a squatting, corpulent, creature with facial tentacles and long, narrow wings. Also are several gold coins displaying a face which appears to be a blend of human, fish and frog.

Any Investigator with Occult or Sense Trouble will feel a vague malignancy from the statuette.

Winthrop will inform the Investigators the statuette was captured in a police raid on a cult ceremony in a Louisiana swamp, and that the coins are said to be from a people in the Polynesian Islands who trade with a race of fishmen.

**Alfred Ferguson Winthrop**, 62, mildly crazy, white man with thinning, white hair. Accounting 1, Anthropology 2, Art History 1, Cthulhu Mythos 1, Credit Rating 4, Cryptography 1, History 2, Egyptian Hieroglyphics 1, French 1, German 1, Library Use 1, Occult 1, Theology 1, Bargain 2, Credit Rating 4, Oral History 2, Art 1, Photography 1, Firearms 6, Health 8, Sanity 6, Stability 8.

.22 caliber revolver. Point Blank +2, Close +0, Near +0, Long n/a

### **Pursuing Suspects**

As the scenario progresses and the villains learn someone is trying to thwart them, they will do their best to succeed. This may involve any number of things, including threatening, capturing, killing or otherwise harassing anyone they believe is helping the Investigators and sending thugs to (hopefully unsuccessfully) kill the party.

They also will communicate with one another through mail correspondence, telegrams and possibly messengers. Most of this will be regarding their learning of the mysteries held within the books, their mounting concerns and suspicions of the Investigators and various plans to do away with them and any who assist them. Some of these communications are included here as handouts.

Given the fluid, sandbox nature of the remainder of this campaign, it is impossible to provide adequate further handouts. However, the Internet is rife with all sort sorts of beautiful templates.

Remember to include sufficient clues for the Investigators to assemble and learn that their enemies' plan is to retreat to their own bases of operation, read the books to learn their secrets, then meet in six months, on Wednesday the 12th of September, 1934 to exchange knowledge and



possibly re-distribute the books.

Their meeting place is to be a mansion in a forested area by a lake on Pawtuckaway, New Hampshire. If this location is somehow compromised, they are to meet at a castle in Scotland, in a forested area overlooking the North Sea, just East of the town of Montrose.

**“L.L.”** Luciana Lopez will never be referred to by name. The first several clues the Investigators find regarding her will only name her as “L.L” Eventually, one will mention her in context with “the library in Madrid.”

**Thugs.** Each antagonist has a certain number of thugs. Due to a combination of a peek at ultimate cosmic truth and excellent pay, these people are absolutely loyal.

**Thug Mook.** Scuffling 6, Weapons 2, Sanity 3, Health 8, Sanity 3, Stability 6.

**Thug Boss.** Interrogation 1, Intimidation 1, Streetwise 1, Locksmith 1, Athletics 4, Driving 4, Explosives 2, Firearms 4, Fleeing 4, Scuffling 6, Shadowing 4, Stealth 4, Weapons 4, Health 12, Sanity 4, Stability 10.

Any might have a small club, with a -1 damage modifier.

Each boss has a .38 caliber revolver. Point Blank +3, Close +2, Near +2, Long n/a.

**Professor Thomas Admundson, PhD of Harvard University.** Professor Admundson may be found in the Social Sciences Building, where he teaches Anthropology, Ancient History, Archeology and Latin. He is a stodgy but friendly man and will promptly offer cigars and brandy once the Investigators introduce themselves as friends of Professor Armitage.

He laments the death of “Henry,” and for a silent moment his eyes will glitter with moisture. He will then momentarily remove his thick eyeglasses to wipe his eyes then resume the conversation. (Professor Admundson is entirely innocent and in grieving for his friend. Any Investigator with a point pool in Assess Honesty or Reassurance will detect this.)

Professor Admundson will tell the Investigators he has corresponded with Alfons Harte, Curator Metropolitan Museum of Art in Manhattan, New York City. He states Harte has also expressed an interest in such books and he may be worth talking to. He believes Harte has also communicated with Professor Armitage.

He will state he and Henry attended Harvard together, then receive their PhDs at Miskatonic. Naturally, he will pepper this with various tales of student hijinks.

He informs the Investigators the two have long sought a very specific type occult books which contain knowledge many people believe holds deep and dangerous cosmological truth, though he does not expect the Investigators to believe this. The two are trying to fill out their libraries, and keep these tomes out of general circulation. Whether or not dark magic is real, those who believe in it will perform dark deeds.

Should the Investigators find themselves at the Professor’s residence, it is a single-story, two bedroom, one bathroom faculty apartment on Harvard campus.

**The Book:** In one of the two locations, the Professor has something to show the Investigators. From the false bottom of a desk drawer, he produces a heavy, steel box, locked with a padlock. From this he produces a folio-size (20" x 25" and) book, with a black leather cover. It bears no title.

As the book comes in to view, any Investigator with Occult or Sense Trouble will feel a palpable sense of menace from it and become mildly sick to their stomach. Professor Admundson will notice this and state “You feel it, don’t you. The evil within this book.”

He will explain this is an English translation he painstakingly made himself, over a period of two years, of a Latin tome entitled “Liber Ivonis” or “The Book of Eibon,” and that doing so took a toll on his sanity and possibly his soul as well.

If asked where the Latin version is, he will (truthfully) state he burnt it.

**Professor Thomas Admundson**, 54, PhD, grey-haired, generous, white professor. Anthropology 2, Archeology 2, Art History, 1, Cthulhu Mythos 1, Credit Rating 5, Cryptography 1, History 3, Apache 1, Arabic 1, Armenian 1, Cantonese 1, Danish 1, French 1, German 1, Greek 1, Hebrew 1, Italian 1, Latin 2, Spanish 1, Library Use 2, Occult 2, Theology 1, Bureaucracy 1, Credit Rating 5, Oral History 2, Art 1, Photography 1.

**The Honorable John Mason.** Associate Justice of the Massachusetts Supreme Judicial Court in Boston, which is composed of 1 Chief Justice and 6 Associate Justices.

His residence is a three-story, 9 bedroom, 4 bathroom home at 7 Appleton St, Cambridge Massachusetts. His (innocent) housekeeper, Claire Thayer, comes every Tuesday and Thursday at Noon. She has keys to all the doors in the house.

His Thug Boss is his Law Clerk, third-year Law student Bryce Woodson. He also has two Thug Mooks—petty criminals Sammie Peterson and David Brown.

**The Book:** Judge Mason possesses Professor Laban Shrewsbury’s “The Celaeno Fragments,” in English. This will take him four months to read, completed on July 9th and will grant him a point pool of 1 in Cthulhu Mythos. He will learn the spell Brew Space Mead.

Judge Mason keeps the book in a locked drawer of his fine, huge, mahogany desk in his personal study. He holds the only key. On his desk are a journal, a globe, a fine pen and pencil set, a wooden box of fine cigars and a desk calendar.

Judge Mason has made notes in the journal on his desk, summarized by the following excerpt “Great Library of Celaeno, on a planet in the Pleiades, transportation to and from which requires some sort of mount. A human rider would need some sort of magical protection for flight through space. Massive library, involving spoken word and a study area. Apparently some terrible danger involved with taking any items.” (See Handout #7.)

**A Note:** If the date is April 22nd or later, the journal also contains a hand-written note, in a woman’s hand. The note reads “John, I hope this note finds you well. I have been making slow but steady progress with the Fragment. LL, Madrid.” (See Handout #8.)

If the date is December 16th or later, there is a second note, which reads “John, I hope this letter finds you well. I have completed the Fragment and learned a spell by which one may protect oneself from attack. LL, Madrid.” (See Handout #9.)

**Bonus Clues:** A 1 point spend in Evidence Collection reveals a note in the desk calendar on Wednesday September 12th, which reads “Meeting at the mansion.” (See Handout #10) Also, there is a rattling sound in the globe. If cracked open, the globe contains one of the magical, pea-sized emeralds for *The Crown of Command*.

These clues can be found without the point spend simply by looking in these places. If

the emerald is not found here, it is simply somewhere else unless they have all been found.

**Locals:** Various locals may be met in the area. Possibilities are local restaurant staff, custodians in the county courthouse, law students and professors, a legal secretary etc. These people's opinions can range from positive to negative or somewhere in between. Perhaps a custodian or someone in the legal community has noticed the Judge behaving oddly of late. Names of these people may include: Charles Gallegos, Edmund Carruthers, Dennis Walker, Scott Marshall, Carrie Quincy, Ethel DeSoto, Julia Lake and Patsy Freeman.

**Judge John Mason**, 55, dignified, confident, white man, Cthulhu Mythos 1, Credit Rating 6, Latin 1, Law 3, Firearms 3, Fleeing 6, Health 10, Sanity 2, Stability 6.

**Brew Space Mead (Which he gains on July 9th):** A very small amount expands perception immensely, including supernaturally, and provides *vague* mental communion with a fellow-imbiber, including occasional bursts of strong emotion and clear sensation. Sense Trouble is an Investigative Ability for as long as the taste lasts. The imbiber is dozy and drug-addled though, if attacked, may recover after one round.

Large dose (thimble-full) perception into a pocket wormhole, overwhelming hallucinations, withstand interstellar space, need arranged transport.  
Stability Test Difficulty: 2 to imbibe.

Cost: 2 Stability for a small sip, 3 for the full dose.

Time: A small sip lasts for the imbiber's current Stability pool in hours, and the full dose lasts for the duration of the space voyage. Imbibing the mead takes one round, but can be done while fleeing.

**Mayor Roman Bradley.** Mayor of Beverly Massachusetts pop. 45,000. Bradley carefully conceals the fact he is a homosexual, though his wife and all in The Eight know this.

His residence is a two-story, six bedroom, 3 bathroom home at 2100 Oceanside Dr, Beverly Massachusetts, in a wooded area overlooking the sea.

His Thug Boss is his wife Patricia. He also has two Thug Mooks—City Councilman Xavier Ferguson and Intern Holly Carson.

**The Book:** Mayor Bradley possesses “Cultes des Goules,” in French. This will take him three months to read, completed on July 19th and will grant him a point pool of 1 in Cthulhu Mythos. He will learn the spell Shrivelling.

Mayor Bradley keeps the book in a briefcase he carries with him at all times and which opens with two keys. He and his wife each possess a key. If the date is at least Thursday March 22nd, the briefcase will also contain a letter on the stationery of Alfons Harte, Head Curator of the Metropolitan Museum of Art in New York City.

**The Letter in the Briefcase:** The, dated March 20th, letter reads “Roman, unfortunately we were correct in our assumption that the shards are utterly indecipherable. I hope you are having better luck with the French tome. I have yet to hear from our esteemed Knight, though I imagine his work will take the longest of us all.

Given the essentially inert nature of the pottery, I have been unable to sway anyone to the cause of The Eight. Yours, Alfons.” (See Handout #11)

**Sheet of Paper in Book:** Showing from between the pages of the book at no particular location, is a page of the Mayor's stationary. It bears a brief typewritten message which reads "Life extension through cannibalism?" (See handout #12)

Also on the paper is a note, reading "9/12 Pawtuck/Montrose." An extensive knowledge of New England or a few hours of study with maps, atlases etc. will reveal there is a town in Rhode Island called Pawtucket as well as a lake by the same name in southeastern New Hampshire. An extensive knowledge of Great Britain or a few hours of study with maps, atlases etc. will reveal there is a small parish called Montrose on the East coast of Scotland.

**Bonus Clues:** If the Investigators have not yet found all the magical, pea-sized emeralds for *The Crown of Command*, Patricia Bradley wears one on a silver necklace.

**Locals:** Various locals may be met in the area. Possibilities are local restaurant staff, custodians in the city courthouse, city clerks and judges, a secretary etc. These people's opinions can range from positive to negative or somewhere in between. Perhaps a custodian or someone in the community has noticed the Mayor behaving oddly of late. Names of these people may include: Clyde Whitehouse, Erik Zilber, Tony Ballard, Corey Campbell, Dawn Simons, Beverly Parenzin, Gina Emerson and Debra McCormack.

**Mayor Roman Bradley**, 36, Medium built, brown-haired, white man. Cthulhu Mythos 1, Credit Rating 6, French 1, Spanish 1, Law 3, Firearms 3, Fleeing 6, Health 10, Sanity 2, Stability 6.

**Shrivelling (Which he gains on June 19th):** This spell blackens and twists the flesh of a target regardless of armor. It works on any target at long range or closer that the caster can see or smell.

After the test to cast the spell, the caster makes a second Stability test against the target's current Stability, modified by -2 if the caster holds a piece of the target's hair, bloodstain, or other physical sample. For every point by which the caster succeeds at that test, the target loses 1 Health pool point and 1 Health rating point.

Stability Test Difficulty: 4

Cost: 4 Stability

Time: 2 rounds

**Alfons Harte.** Curator Metropolitan Museum of Art in Manhattan, New York City.

His residence is a two bedroom, one bathroom apartment in a luxury, thirty story apartment building by Gramercy Park, a private park in Manhattan, New York City.

Due to the incomprehensible nature of his book, he has had no opportunity to degrade anyone's minds to make them cultist thugs.

**The Book:** Alfons Harte possesses "The Eltdown Shards"—several pottery shards marked in unknown symbols. He will find it indecipherable and gain no Cthulhu Mythos. He will learn no spells.

Harte keeps the shards prominently displayed in a glass case with a glittering, pea-sized emerald. The display case bears a placard which makes the same statement Harte and the other museum employees will make, that the shards and stone were found by a team of explorers deep

in caverns beneath Greenland, thought by many to be the location of fabled Hyperboria and/or Atlantis. (All but Harte believe it to be true.)

**A Letter:** Speaking to the Museum secretary Hilda Farnsworth, an appropriate occupational relationship or a point pool in Reassurance or other Ability at the Keeper's discretion will yield a letter to Harte from a Judge John Mason in Boston.

If the date is prior to June 11th, the letter reads "Harte my Friend, despite the term 'Fragments,' this work is fascinating and contains much information regarding a 'Great Library of Celaeno,' on a planet in the Pleiades. A human traveler would require some sort of magical protection for flight through space, as well as a creature to use as a mount." (See Handout #13A)

If the date is on or after June 11th, the letter reads "Harte my Friend, despite the term 'Fragments,' this work is fascinating and contains much information regarding a 'Great Library of Celaeno,' on a planet in the Pleiades. A human traveler would require some sort of magical protection for flight through space, as well as some sort of creature to use as a mount.

This is a massive library, involving spoken word and a study area. There also is apparently some terrible danger involved with taking any items.

I have learned how to brew a liquid called 'Space Mead,' which is the necessary requirement for safe human travel.

'L.L.' reports progress with her work." (See Handout #13B)

In the latter case, the Judge has written the numeral "1" in the upper right-hand corner of the (one-page) letter.

**Bonus Clue:** There are no bonus clues to be found in the museum, though there is one available at Harte's home if the date is on or after June 11th. If the Investigators attempt to find Harte's home, allow them to do so. Remember he has no thugs. A 1 point spend in Evidence Collection leads the Investigators to a fine, heavy, oak liquor cabinet, in which they find a sheet of paper folded in half. On the paper rest eight, small, glass vials of a light amber liquid.

The paper is page two of the letter from Judge Mason. It has the numeral "2" in the upper right-hand corner, and reads "I have prepared the enclosed eight doses of space mead, the liquid required to protect one during space travel. When we meet and if I am able, I will have sufficient steeds available for travel to the Great Library, should The Eight wish to do so. Please keep these items especially safe, as the making of the mead is extremely taxing." (See Handout #14)

**Security:** The museum has a general "Please Do Not Touch" policy, politely enforced by docents and unarmed security guards. The glass case containing the shards and gem triggers an alarm bell is tampered with. At night, the doors and windows are also set with alarm bells. The unarmed guards carry flashlights and will call the police in case of a break-in. However, clever Investigators may find a guard smoking out back by an open/unlocked door.

**Locals:** Various locals may be met in the area. Possibilities are local restaurant staff, museum staff and visitors, local academics (see Columbia University, below) etc. These people's opinions can range from positive to negative or somewhere in between. Perhaps someone has noticed the Curator behaving oddly, paying unusual attention to patrons looking at the items in the glass case etc. Names of these people may include: Jim Lowery, Tyson Stevens, Tamara Bigelow and Kathy Hogan.

**Museum Employees:** Employees of the museum may report that the Curator was initially very excited about the new exhibit, though his interest has waned. He now seems more

interested in watching patrons in the hopes that the display is sufficiently interesting to justify its acquisition. However, no employees know of the source of, nor the price paid for, the items.

**Columbia University:** If the Investigators seek the advice of an academic, they will find themselves at Columbia University and the office of Professor John Oliverson, PhD Archeology.

Professor Oliverson will do his (sincere) best to assure the Investigators the clay shards are spurious, though the emerald is genuine and quite valuable. He further states that he and Alfons Harte are friendly acquaintances, the museum does quite well and the Curator has always been of the utmost integrity. He therefore sees no reason Harte would be trying to sensationalize false artifacts and is concerned about Harte's standing in the academic community.

**Alfons Harte**, 48, plump, congenial, white man. Cthulhu Mythos 1, Credit Rating 5, French 1, Spanish 1, Law 3, Firearms 3, Fleeing 6, Health 10, Sanity 2, Stability 6.

**Sir Humphrey Amstead.** Knight of the British Empire.

His residence is a three story, twelve bedroom, six bathroom home at London W8 4PX, UK, just North of the Kensington Palace Royal Museum. The home sits on a 100' by 200' wooded lawn, surrounded by a black, wrought-iron fence, gated at front and back.

His two Thug Bosses are his butler Nigel Kensington and local constable Penrod McAllister (who may not *legally* carry a firearm on duty). He also has eight Thug Mooks—his (Black) gardener Thomas Samuelson, his (Chinese) cooks Mr. And Mrs Chang, local constable George Titus, public librarian Reginald Farrington, tobacconist Whitaker Dunn, newspaper editor Dennis Carmichael and chocolatier Henrietta Jacobson.

**The Book:** Amstead possesses “The Pnakotic Manuscripts,” in Greek. This will take him approximately one and a half years to read, completed on September 6th 1935 and will grant him a point pool of 2 in Cthulhu Mythos. He will learn the spell Contact Winged One (Contact Elder Thing).

**A Letter:** In Amstead's study, in a locked desk drawer, is a letter from Dr. Lewis Burnside in San Francisco. If the date is prior to May 28th, Burnside writes “Sir Humphrey, I am making good progress in reading *Thaumaturgical Prodigies In The New England Canaan*.” (See Handout #15A)

If the date is on or after May 28th, the letter reads “Sir Humphrey, I am making good progress in reading *Thaumaturgical Prodigies In The New England Canaan*, and have learned the spell *Sign of Kish*. This is a protection against the sort of beings with whom The Eight wish to bargain.” (See Handout #15B)

**Bonus Clue:** Depending on Investigator profession, contacts, Credit Rating, cleverness etc., the Investigators may speak to someone the Keeper feels may provide the following information. This will also require a 1 point spend in any one of Law, Theology, Bureaucracy, Flattery or Reassurance. Depending upon the interviewee, a point spend in Intimidation will also suffice, but will have repercussions. If all else fails, there could be a few Credit Rating 1 or 2 folks loitering ‘round back who are friendly with the kitchen staff.

Sir Humphrey is a member of a small traditional gentleman's club called Oakhurst Lodge, named for the wealthiest member of its founders, Reginald Blythe Oakhurst. The current members are: Reginald Blythe Oakhurst IV who has vast petroleum holdings, Father Thomas

Lemmons-Bishop of the Anglican Church, Charles Maynard Talbot who has vast coal mining holdings, William Dyers who inherited a textile dynasty, Oscar Garrison Bridger who owns dozens of highly successful casinos, Yancy Jacob Meyer who is the landlord of millions of acres of farmland and Sir Humphrey himself.

The club is quite opulent, filled with fine wooden furniture, rare original art, fine china, the finest brandy, wine and cigars etc. Naturally, one can play snooker, billiards, skittles, chess and various other sufficiently dignified games here. Any Investigators of less than Credit Rating 5 will be smugly tolerated during their brief visit. Sir Humphrey will be conveniently absent when the Investigators arrive unless for some reason they wish him to be in attendance.

The other members of the club will state Sir Humphrey has always been an upright and solid chap though his demeanor has taken a bit of a dark turn of late. His friendliness remains undiminished but he has begun to make vague references to a “deeper and more profound understanding of the cosmos.” This all began when he recently acquired a book he has been avidly reading. None have seen the book and all assume it is at Sir Humphrey’s home.

Remember that none of these men are involved in any way with “The Eight,” other than being friends of Sir Humphrey. Once this encounter has taken place, the lodge members will finally speak to Sir Humphrey of their recent growing concerns for his well-being and mention a group of individuals have asked about him as well. They will describe the Investigators to him.

**Locals:** Various locals may be met in the area. Possibilities are staff at the lodge, local delivery services etc. These people’s opinions can range from positive to negative or somewhere in between. Perhaps someone has noticed Sir Humphrey behaving oddly. Names of these people may include: Kevin Stotts, Bill Abbot, Mortimer Jones, Flora Patterson, Azure Evans and Jane Sawyer.

**Sir Humphrey Amstead**, 25, fit, brown-haired, white man. Cthulhu Mythos 1, Credit Rating 7, French 1, Greek 1, Spanish 1, Law 3, Athletics 8, Firearms 3, Fleeing 6, Weapons 10, Health 10, Sanity 2, Stability 6.

Sword +1 damage modifier.

**Luciana Lopez (“LL”)**. Head librarian at the Biblioteca Nacional de España (National Library of Spain) in Madrid, Spain. Though unmarried, she is referred to as “Señora Lopez,” due to her age and status.

Her residence is one-story, three bedroom, two bathroom, home at Calle Pablo Aranda, 150, 28006 Madrid, Spain.

Her Thug Boss is Chief of the Madrid Police Alejandro Gutiérrez (with whom she maintains a romance). She also has four Thug Mooks—police officer Manuel Ortiz, violinist Claudia Mendez, Baker Pedro Gomez and theater manager Fernando Santiago.

**The Book:** Lopez possesses “Liber Ivonis Fragment,” in Latin. This will take her approximately nine months to read, completed on December 11th and will grant her a point pool of 1 in Cthulhu Mythos. She will learn the spell Deflect Harm.

Señora Lopez keeps the book in a locked filing cabinet in her office.

**A Letter:** In the same locked filing cabinet, Lopez keeps a letter from Father Dominic Lockwood in Toronto, Ontario Canada. If the date is prior to September 21st 1935, on his

letterhead he writes “L.L., I am making a careful and thorough reading of the immense Latin tome entrusted to me, Dominic.” (See Handout #16A)

If the date is on or after September 21st 1935, the letter states “L.L., I have made a careful and thorough reading of the immense Latin tome entrusted to me. In doing so, I have acquired an incantation by which to contact some sort of creature, a ‘goule,’ which is magical in nature, burrows in graveyards and apparently has an ability to cross the barrier between this world and another, Dominic.” (See Handout #16B)

**Bonus Clues:** Not difficult to notice, but perhaps to acquire, is an emerald on a gold necklace Señora Lopez wears. The mounting is on a gold disc, about half an inch in diameter. On the back, the disc is engraved “Luciana, Te amo mi amor.” Knowledge of Spanish (or Italian or Latin) reveals this translates to “Luciana, I love you my love.”

**Locals:** Various locals may be met in the area. Possibilities are library employees and patrons, street food vendors etc. These people’s opinions can range from positive to negative or somewhere in between. Perhaps people have noticed Señora Lopez fiddling with a new necklace, obsessively reading a huge tome the library has recently acquired but she has not made available etc. Names of these people may include: Juan Diego Figoroa, Marcos Tobilla, Bruno Degani, Olivia Griego, Mariana Urrabas and Agustina Guiremand.

**Señora Luciana Lopez**, 51, very attractive Spanish woman with golden brown skin, long, black and silver hair and deep brown eyes. Cthulhu Mythos 1, Credit Rating 6, English 1, French 1, Latin 2, Flattery 2, Reassurance 2, Law 3, Athletics 8, Firearms 3, Fleeing 6, Weapons 12, Health 10, Sanity 2, Stability 6.

Rapier +0 damage modifier.

**Alejandro Gutiérrez**, Athletics 6, Firearms 4, Scuffling 2, Weapons 2.  
.32 caliber pistol Point Blank +2, Close +0, Near +0, Long n/a

**Deflect Harm (Which she has on December 11th):** This spell protects the caster against any perceived physical harm. The caster may spend any number of Stability and up to that number of points of damage is avoided.

Stability Test Difficulty: 4 (3 with an Athletics spend)

Cost: Number of Stability caster chooses.

Time: Response to attack. Replaces caster’s next turn action.

**Dr. Lewis Burnside, MD.** Chief Psychiatrist at the San Francisco Psychiatric Hospital.

His residence is a one-story, two bedroom, one bathroom home at 434 Tide Street, San Francisco California.

His Thug Boss is his Head Nurse Gina Nethers. He also has five Thug Mooks—Orderlies Spencer Wallace and James Gaines, and violent patients Christina Wood, Emily Washington and Dalton Blue.

**The Book:** Burnside possesses “Thaumaturgical Prodigies In The New England Canaan,” written and annotated in English by the Reverend Ward Phillips. This will take him approximately two months to read, completed on May 21st and will grant him a point pool of 1



in Cthulhu Mythos. He will learn the spell Elder Sign.

Dr. Burnside keeps the book in a wall safe in his home, behind a picture hanging in his living room. The picture is of a seaside town. Inside the house is also Dr. Burnside's faithful German Shepherd Freddie. Freddie will bark loudly at intruders and defend Dr. Burnside. He will also fight back if attacked. At the Keeper's discretion, some of Burnside's thugs may also be present.

Opening the safe without the key, which the doctor carries on him, requires a 1 point spend in Locksmith, or one hour *and* a Difficulty 8 Mechanical Repair roll. Failing this, the Investigators can rip the safe from the wall. It weighs 150 pounds.

Inside the safe is also *The Crown Of Command* (see p. #), with no emeralds.

**A Note:** Among some clutter on the doctor's desk is a hand-written note, which reads "Stapleton, Book of Arab." (See Handout #17)

**Bonus Clues:** A 1 point spend in Evidence Collection, or a thorough search of the office which includes Investigator mention of checking medical files, yields an very thin folder bearing the patient name "Stapleton."

This contains only one sheet of paper, which is a typed letter from General Stapleton, on his letterhead. If the date is prior to October 24th, it reads "I should be finished with 'al-Azif: Ye Booke of the Arab' fairly soon." (See Handout #18A)

If the date is on or after October 24th, he writes "I have finished with "al-Azif: Ye Booke of the Arab" and learned two spells—one which allows one to control another and one which affords magical protection." (See Handout #18B)

**Locals:** Various locals may be met in the area. Possibilities are a nurse or a fellow psychiatrist, a man from the Ace, the company which provides laundry service to the hospital etc. These people's opinions can range from positive to negative or somewhere in between. Perhaps the trustee patients who interact with the laundry staff are new and carry themselves with a smirking arrogance, or a nurse has noticed the doctor behaving oddly of late. Names of these people may include: Kyle Oberman, Cecil Gembala, Elmer Chapman, Tara Cochran, Charlene Pesanti and Beatrice Lemon.

**Dr. Albert Danforth MD,** If the Investigators seek a colleague of Dr. Burnside, they will find Dr. Albert Danforth, who works under Dr. Burnside at the San Francisco Psychiatric Hospital. Dr. Danforth will quietly ask the Investigators to meet him for lunch at a café some distance from the hospital. He picks up he tab.

The doctor states he is concerned about Dr. Burnside's recent behavior. The least of it is that he suddenly has become virtually obsessed with the Salem witch trials, and has been hinting that there may have been more to the claims of witchcraft than history admits.

Of more concern to Dr. Danforth is Burnside's recent activity involving several of his more violent patients. Dr. Danforth seems to be allowing them an unusual amount of freedom, possibly even having them as house guests. If asked about the identities of these patients, he will state he is not certain who all of them are and would be ethically and legal prohibited from revealing that information in any case.

**Dr. Lewis Burnside,** 38, tall, awkward, white man with eyeglasses and graying red hair. Cthulhu Mythos 1, German 2, Latin 1, Medicine 2, Assess Honesty 2, Bureaucracy 1, Credit

Rating 5, Flattery 1, Reassurance 3, Driving 4, First Aid 8, Hypnosis 6, Sense Trouble 6, Scuffling 4, Health 10, Sanity 2, Stability 12.

Burnside keeps many keys on his person, including the one to the wall safe in his home.

**Freddie the German Shepherd**, Athletics 12, Health 6, Scuffling 10  
Bite +0, Hit Threshold: 4, Alertness Modifier: +3, Armor: -1

**Elder Sign (Which he has on May 21st):** Also known as the Sign of Kish. This star-shaped (or swastika-shaped, or branch-shaped, depending on your sources) symbol seals a path or entrance against the minions of the Great old ones or the outer Gods. The symbol must be engraved in a physical object, sealed in lead or brass, or drawn on the threshold. An Elder Sign amulet does not protect the wearer against attack.

Stability Test Difficulty: 4

Cost: 1 Stability rating point

Time: Five minutes

**Father Dominic Lockwood.** Priest of Saint Mary's Church in Toronto, Ontario Canada. Crossing into Canada should pose little problem for the Investigators. The border was controlled beginning in 1908, however this was still loosely enforced by 1934. As long as they go over away from an official crossing point or after hours, or both, they will be fine unless the Keeper deems otherwise.

He resides in a Clergy house, attached to the church.

His Thug Boss is his eldest altar boy, Lance Walker. He also has 4 Thug Mooks, all altar boys—Freddie Cochran, Douglas Bingham, Owen Carstairs and Keith Roth. Unlike the usual Thug entries, these boys are as listed beneath the statistics entry for Father Lockwood.

**The Book:** Lockwood possesses "The Necronomicon," in Latin. This will take him approximately one and a half years to read, completed on September 15th 1935 and will grant him a point pool of 2 in Cthulhu Mythos. He will learn the spell Contact Ghoul (the church has an extensive cemetery).

Lockwood keeps the book in a locked compartment in his lectern.

**A Letter:** Inside the Necronomicon is a letter from Mayor Roman Bradley of Beverly Massachusetts. If the date is prior to June 23rd, on his letterhead, Bradley has typed "I am reading the French work on goules, which are apparently some sort of humanoid creatures which feast on human flesh. The book also indicates there are humans involved with these beings who form cults related to cannibalism in the belief they will gain some magical benefit." (See Handout #19A)

If the date is on or after June 23rd, Bradley types "I have completed a thorough reading of the French work on Goules, which are apparently some sort of humanoid creatures that feast on human flesh. The book also indicates there are humans involved with these beings who form cults which engage in cannibalism for the purpose of transforming into these creatures. These goules have an extraordinary ability to tunnel between our world and a vast underground cavern which apparently lies beneath a complete world where some humans travel in dream. In our

world, these tunnels emerge in graveyards.

Also, I have learned an offensive magic which causes the target's flesh to twist and blacken."

The letter is signed "Yours in service to The Eight, Roman." (See Handout #19B)

**Bonus Clue:** In the church office, on Father Lockwood's desk, is a sheet of his letterhead. On this is a handwritten note which appears as gibberish. However, an Investigator with a point pool in Latin recognizes it as encrypted Latin. With a 1 point spend in Cryptography and an hour's work, they can read the message. If the Investigator with Latin does not have Cryptography, they can work with one who does, but the Cryptography spend is 2 points and time required is two hours. (See Handout #20)

Translated, the message reads "The stone for Blackthorne, opened, reveals the stairs to the stone-walled room where they come to converse and trade. Here also is an emerald. Beyond this room lies the way to their world and many locations around the Earth. This could be a safe passage to the mansion on the lake in New Hampshire, or the alternate meeting place at the Castle at Kinnaber."

In the cemetery, the Investigators can find a huge, 8' x 8' x 10' tall monument inscribed "Edward Blackthorn 1790-1887." A Difficulty 5 Mechanical Repair roll allows the Investigators to unlock it. Failing this, half an hour of work will suffice. (See Handout #21)

The Investigators may then open a door in the face of the monument, allowing a soft hiss from the release of air which smells of earth and faintly of decay. This will reveal a stone stairway, descending fifteen feet into darkness. This leads to a stone-walled room, approximately 20' x 20'. Opposite this entrance is a tunnel leading further into darkness.

In this room are seven chairs and a table, all of wood, heavily made and in no way ornate. On the tunnel side of the table are several scratch marks, and atop it rests an oil lamp and a small wooden box. The box, lined with red velvet, contains an emerald.

Once the Investigators start poking around this room, one must make a Difficulty 5 Sense Trouble roll to notice the running and speech-like barking sounds fast approaching from the tunnel. If they immediately flee, they do so without incident. Otherwise, combat with a Ghoul ensues. (See Ghouls, p. 21)

**Locals:** Various locals may be met in the area. Possibilities are parishioners and volunteers at the church, the church custodian/groundskeeper, a local grocer etc. These people's opinions can range from positive to negative or somewhere in between. Perhaps the groundskeeper has recently noticed the Father spending more time in the cemetery at night than usual, the office volunteer wonders why that enormous book seems so disturbing to her and why the Father is so focused on it etc. Names of these people may include: Justin Minnefield, Zachary Keaton, Brian Delvo, Kendra Dyer, Eillene Tuttle and Berta Steadman.

Father Dominic Lockwood. Cthulhu Mythos 2, Credit Rating 4, Cryptography 1, Latin 2, Library Use 1, Medicine 1, Reassurance 2, Firearms 2, First Aid 2, Stealth 1, Health 6, Sanity 2, Stability 8.

.22 caliber revolver. Point Blank +2, Close +0, Near +0, Long n/a

**Thug Boss Lance Walker (age 15),** Athletics 8 (Hit Threshold 4), Scuffling 2, Stealth 4,

Weapons 4, Health 12, Sanity 3, Stability 10

**Thug Mooks Freddie Cochran (age 14), Douglas Bingham (age 13), Owen Carstairs (age 11) and Keith Roth (age 10),** Athletics 8 (Hit Threshold 4), Stealth 6, Weapons 1, Health 9, Sanity 3, Stability 10

Killing any of these altar boys requires a Difficulty 4, 4 point Stability test.

**Contact Ghoul (which he will have on September 15th 1935):** May be cast only on moonlit nights in a burying ground at least a century old. This spell does not guarantee safety from ghoul attacks, but the ghouls contacted will stop to see what the caster wants before deciding whether to dismember him for sweetbreads.

Stability Test Difficulty: 4

Cost: 3 Stability

Time: Three minutes of frenzied barking in ghoulish; the ghouls will appear before morning

**Lieutenant General Frederick Stapleton.** Commander of Fort Sherman Army Base, Chicago, Illinois. How the Investigators gain access to, and any degree of freedom of movement within, a United States Army base is between them and the Keeper.

His residence is a two-story, three bedroom, two bathroom home on the base.

His two Thug Bosses are his Personal assistant Major Adrian Morris and his driver Scott Marshall. He also has nine Thug Mooks—his secretary Vivian Powers, Military Police officers Ssgt. Dennis Walker, Sgt. Eric Grutsch, Cpl. Anthony Warwick, Motor Pool officer 2nd Lt. Corey Campbell, Mechanic Cpl. Meyers Sowers, Mess Hall Cook Cpl. Eugene Gladstone and Civilian Building Contractors Hank Capper and Warren Arnold.

**The Book:** Stapleton possesses “al-Azif: Ye Booke of the Arab,” in English. This will take him approximately seven months to read, completed on October 18th and will grant him a point pool of 1 in Cthulhu Mythos. He will learn the spells Dominate and Elder Sign.

**A Note:** On the General’s desk is a folder marked “Top Secret.” In the folder is a note from Sir Humphrey Amstead. If the date is prior to September 10th 1935, Amstead writes “General Stapleton, My reading of ‘The Pnakotic Manuscripts’ will take some time to complete. Thus far, it seems to relate pre-human history and the activities of a race of beings who supposedly created all terrestrial life. I will write to you again when I have made further progress. Yours, Sir Humphrey Amstead.” (See Handout #22)

If the date is on or after September 10th 1935, the letter reads “General Stapleton, I have completed my reading of ‘The Pnakotic Manuscripts.’ It describes in detail pre-human history and the activities of a race of beings who supposedly created all terrestrial life, and instructs the reader in their written language.

It also contains the instructions for initiating contact with this race. I am uncertain if such ancient beings would still exist, as well as whether or not such an effort would be prudent. Yours, Sir Humphrey Amstead.”

**Bonus Clue:** If the date is on or after October 18th, there is something interesting in the General’s office. If an Investigator has a military background, or makes a 1 point spend in

Evidence Collection, they will notice a frame on the wall contains, rather than military medals, eight silver disks designed as necklace medallions. On the face of each is engraved a star with an eye in the center. From the eye rises a flame. (These are magically active Elder Signs.)

Assuming the Investigators take apart the frame and remove the disks, they find a sheet of paper within. On the paper is typed "Seals a path or entrance against the minions of the 'Great Old Ones or the Outer Gods,' but does not protect against attack.

**Locals:** Various locals may be met in the area. Possibilities are various military personnel, civilian contractors etc. These people's opinions can range from positive to negative or somewhere in between. Perhaps a subordinate has noticed the General recently spending an inordinate amount of time in his office and being unusually tired. The General may have recently been making remarks regarding Arabia, in which he has never before had an interest. Names of these people may include: Dennis Klemp, James Hodges, Wayne Childress, Monroe Sowers, Jim Eardley and Sue Earle.

**Lieutenant General Frederick Stapleton.** Cthulhu Mythos 1, Credit Rating 5, French 1, German 1, Credit Rating 5, Interrogation 2, Intimidation 2, Athletics 6, Driving 1, Firearms 12, Scuffling 6, Weapons 6, Health 15, Sanity 2, Stability 6.

Cavalry saber. +1 damage modifier.

.45 caliber semi-automatic pistol. Point Blank +3, Close +2, Near +2, Long n/a.

**Dominate (which he gains on October 18th):** The caster may attempt to *Dominate* another and give a simple command. If this succeeds, the target will perform this action to the best of their ability on their next turn only.

After the test to cast the spell, the caster makes a second Stability test against the target's current Stability, modified by -2 if the caster holds a piece of the target's hair, bloodstain, or other physical sample.

Stability Test Difficulty to cast 4 (3 with Intimidate)

Cost: 1 Stability

Time: 1 rounds

**Elder Sign (which he gains on October 18th):** Also known as the Sign of Kish. This star-shaped (or swastika-shaped, or branch-shaped, depending on your sources) symbol seals a path or entrance against the minions of the Great Old Ones or the Outer Gods. The symbol must be engraved in a physical object, sealed in lead or brass, or drawn on the threshold. An Elder Sign amulet does not protect the wearer against attack.

Rumors whisper of a combination Elder Sign and Gate spell that hangs the Sign in intangible hyperspace. Such a spell would be very difficult and taxing to cast.

Stability Test Difficulty: 4

Cost: 1 Stability rating point

Time: Five minutes

### **Closing Scene**

When the campaign has come to a close, the Investigators are approached by a well-dressed man who introduces himself as Attorney Phillip Walton. He informs them he represents the estate of Professor Henry Armitage and hands them an envelope.

Within is a note (See Handout #4), and twenty fifty dollar bills. (\$1000.00)

### **End of Campaign**

## **Creatures Allied With The Eight**

**Ghouls**, can engage in two claw attacks and a bite against the same target in one round.

Abilities: Athletics 9, Health 7, Scuffling 9

Hit Threshold: 4 (5 underground)

Alertness Modifier: +2 (+0 in daylight)

Stealth Modifier: +1

Weapon: +1 (claw), +0 (bite); if two bite attacks in a row succeed against the same target, the second attack thus does double damage. The ghoul need not roll to hit that target thereafter, but will continue to do normal damage to it each round until killed or driven off.

Armor: firearms and projectiles do only half damage (round up)

Stability Loss: 4

**Byakhee**, These resemble necrotic, insectoid vultures.

Byakhee can either strike with both claws or attempt to bite and drain blood.

Abilities (on land/in air or space): Athletics 5/20, Health 8, Scuffling 6/11

Hit Threshold: 4

Stealth Modifier: +1 in air

Weapon: +1 (claw), +0 (bite); following a successful bite, the byakhee will automatically drain 2 Health per round from its victim until killed or driven off.

Armor: -2 vs any (fur and hide, and an absence of vitals)

Stability Loss: +1 (ie. 5 total)

## From The Desk Of:

Professor Henry Armitage, PhD

Works in the Restricted Stacks, ✓ indicating the ones of greatest concern:

Azathoth and Other Horrors, in English;  
 ✓Celaeno Fragments, in English;  
 Celaeno Fragments, Tuttle's translation, in English;  
 Cthulhu in the Necronomicon, in English;  
 Cthulhu in the Necronomicon, Holger Publication, in English;  
 ✓Cultes des Goules, in French;  
 Cultes des Goules in Spanish;  
 ✓Eltdown Shards, a few pottery shards, language unknown;  
 Liber Ivonis fragment, in Latin;  
 ✓Liber Ivonis, in Latin;  
 ✓Necronomicon, in Latin;  
 ✓(Ye) Necronomicon, in archaic English;  
 (Necronomicon) al-Azif: Ye Booke of The Arab, in archaic English, from the Dewart Bequest;  
 (The) Old Ways Renewed, in English, 2 copies;  
 (The) People of the Monolith, in English;

Handouts  
 #1A and  
 #1B

## From The Desk Of:

Professor Henry Armitage, PhD

Works in the Restricted Stacks, ✓ indicating the ones of greatest concern, p. 2:

(The) Phakotic Manuscripts, in archaic English, from the Whateley Bequest;  
 ✓(The) Phakotic Manuscripts, in Greek;  
 (The) Ponape Scriptures, Copeland's Annotated Version, in English;  
 (The) Ponape Scriptures, Hoag Manuscript, in English;  
 Thaumaturgical Prodigies In The New England Canaan: Second Edition, English.  
 ✓Thaumaturgical Prodigies In The New England Canaan, Annotated Copy, in English, and;  
 Ye Booke of Eibon, in archaic English, 2 copies.

## From The Desk Of:

Professor Henry Armitage, PhD

Professor Laban Shrewsbury's Celaeno Fragments, library in star system Celaeno in the Pleiades. Outer gods. Carry Elder Sign, voices, lake.

The Original French Cultes de Goules by Balfour, Ghoul speech, terrible magic.

Eltdown Shards, alien language.

The Latin Liber Ivonis, formerly owned by Alijah Billington, Hyperborea beneath Greenland. Worship of the Toad, terrible magic.

Olaus Wormius's Latin Necronomicon (Orne Bequest)  
 Profound cosmic knowledge, extremely dangerous, terrible magic.

Handouts  
 #2A and  
 #2B

## From The Desk Of:

Professor Henry Armitage, PhD

John Dee's Ye Necronomicon (Whateley Bequest.) Profound cosmic knowledge, extremely dangerous, terrible magic.

Phakotic Manuscripts: (Tuttle Bequest) In Greek, alien writing, origin of terrestrial life. Very fragile.

Rev Ward Phillips' Thaumaturgical Prodigies In The New England Canaan, annotated copy. Terrible magic.



## From The Desk Of:

Professor Henry Armitage, PhD

Roman Bradley?

Admundson? Please God no. Not my dear friend.

Sir Humphrey Amstead?

Who is "LL?"

Handout

#3



Handout

#4



## From The Desk Of:

Professor Henry Armitage, PhD

My friends,

The world will never know of your sacrifice and the debt it owes to you. It is in my undying gratitude that I present to you the enclosed funds, to be divided equally between you or your families.

Yours,

Henry Armitage.

Handout #5

# Tragedy at Miskatonic University

-by Daniel Elwell

University officials were shocked and saddened yesterday morning by the untimely death of Professor Henry Armitage PhD, Head Librarian of the Orne Library. Faculty, staff and students will all miss him dearly.

The Arkham Police Department and the Essex County Sheriff's office have confirmed the death was a murder, though neither motive nor any suspects have been announced.

University officials and the Campus Security Office advise students to exercise caution and to contact them if they see any suspicious persons or activities.

Services for the Professor will be held Sunday the 18th at 1:00 pm, at the United Methodist Church on Saltonstall Street.

Anyone wishing to make a donation is requested to send funds to the University Library.

## Body Found on the Bank of the Miskatonic

-by Daniel Elwell

Yesterday evening, the body of Amos Parker, a custodian at Miskatonic University's Orne Library, was found washed up on the bank of the Miskatonic River. Essex County Sheriff William Smith told this reporter foul play was involved.

Readers are reminded of the murder two days ago of Professor Henry Armitage, the Head of the Orne Library.

Services for Mr. Parker will be held Sunday the 18th at 3:00 pm at First Baptist Church on Church Street.

Anyone wishing to make a financial donation to the family is requested to provide funds to the Church.

Great Library of Celaeno, on a planet in the Pleiades, transportation to and from which requires some sort of mount. A human rider would need some sort of magical protection for flight through space. Massive library, involving spoken word and a study area. Apparently some terrible danger involved with taking any items."

*John,*

*I hope this letter finds you well. I have been making slow but steady progress with the Fragment. LL, Madrid.*

*John,*

*I hope this letter finds you well. I have been completed the Fragment and learned a spell by which one may protect oneself from attack. LL, Madrid.*

**Wednesday 12**

Meeting at the mansion.

---

---

---

**Alfons Harte, Head Curator  
New York Metropolitan Museum of Art**

*Roman,*

*Unfortunately we were correct in our assumption that the Shards are utterly indecipherable. I hope you are having better luck with the French tome. I have yet to hear from our esteemed Knight, though I imagine his work will take the longest of us all.*

*Given the essentially inert nature of the pottery, I have been unable to sway anyone to the cause of The Eight.*

*Yours, Alfons.*

Mayor Roman Bradley  
Beverly Massachusetts

Life Extension through cannibalism?

P/12 Pautuck/Montrose

**The Honorable John Mason, Associate Justice  
Massachusetts Supreme Judicial Court**

Harte my Friend,

P. 1

Despite the term "Fragments," this work is fascinating and contains much information regarding a "Great Library of Celaeno," on a planet in the Pleiades. A human visitor would require some sort of magical protection for flight through space, as well as a creature to use as a mount.

**The Honorable John Mason, Associate Justice  
Massachusetts Supreme Judicial Court**

Harte my Friend,

P. 1

Despite the term "Fragments," this work is fascinating and contains much information regarding a "Great Library of Celaeno," on a planet in the Pleiades. A human visitor would require some sort of magical protection for flight through space, as well as a creature to use as a mount.

This is a massive library, involving spoken word and a study area. There also is apparently some terrible danger involved with taking any items.

I have learned how to brew a liquid called "Space Mead," which is the necessary requirement for safe human travel.

"L.L." reports progress with her work.

John.

**The Honorable John Mason, Associate Justice  
Massachusetts Supreme Judicial Court**

P. 2

I have prepared the enclosed eight doses of Space Mead, the liquid required to protect one during space travel.

When we meet and if I am able, I will have sufficient steeds available for travel to the Great Library, should The Eight wish to do so.

Please keep these items especially safe, as the making of the Mead is extremely taxing.

John.



Dr. Lewis Burgeside  
Chief Administrator  
San Francisco Psychiatric Hospital

*Sir Humphrey,*

*I am making good progress in reading Traumaturgical  
Prodigies in the New England Canaan.*

Dr. Lewis Burghside  
Chief Administrator  
San Francisco Psychiatric Hospital

*Sir Humphrey,*

*I am making good progress in reading Thaumaturgical  
Prodigies in the New England Canaan, and have learned the spell  
Sign of Kish, a protection against the beings with whom The  
Eight wish to bargain.*

Father Dominic Lockwood  
Saint Mary's Catholic Church  
Toronto, Ontario

L.L.,

*I am making a careful and through reading of the  
immense Latin tome entrusted to me.*

*Dominic*

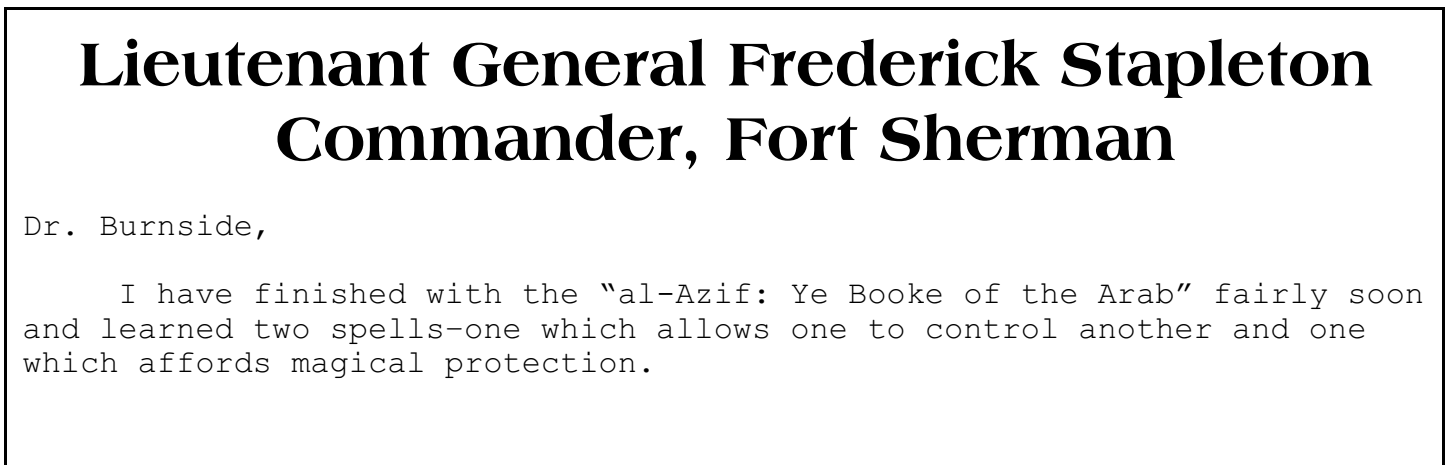
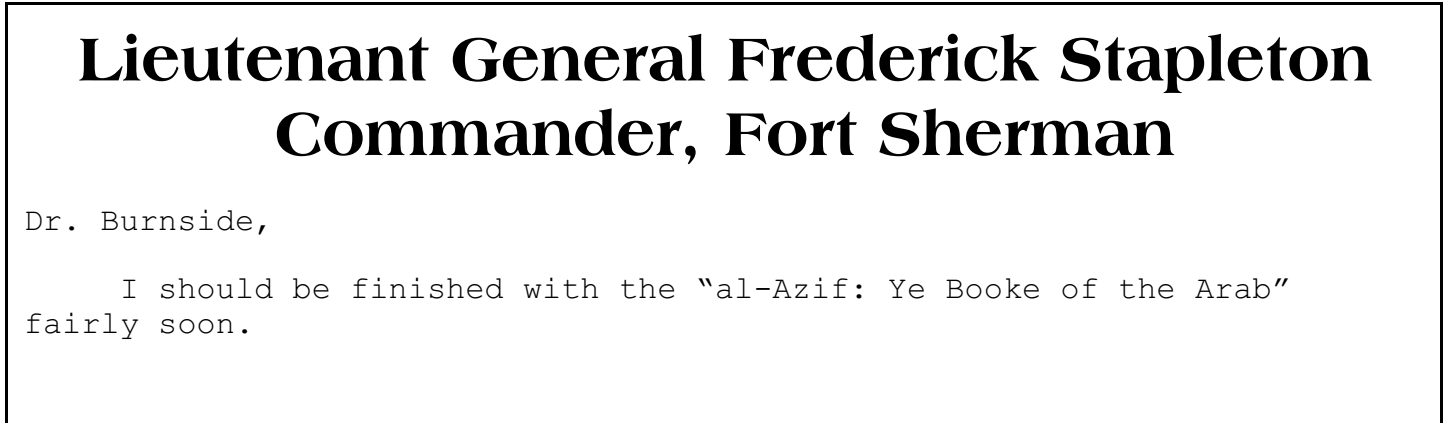
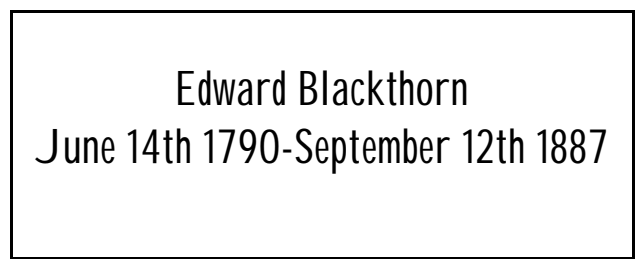
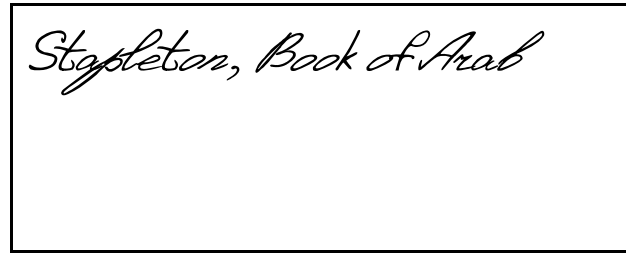
Father Dominic Lockwood  
Saint Mary's Catholic Church  
Toronto, Ontario

L.L.,

*I have made a careful and through reading of the immense Latin tome entrusted to me.*

*In doing so, I have acquired an incantation by which to contact a creature, a "goule," which is magical in nature, burrows in graveyards and apparently has an ability to cross the barrier between this world and another.*

*Dominic*



Mayor Roman Bradley  
Beverly Massachusetts

Father Dominic,

I am reading the French work on “goules,” which are apparently some sort of humanoid creatures which feast on human flesh. The book also indicates there are humans involved with these beings who form cults related to cannibalism, in the belief they will gain some magical benefit.

Mayor Roman Bradley  
Beverly Massachusetts

Father Dominic,

I have completed a thorough reading the French work on “goules,” which are apparently some sort of humanoid creatures which feast on human flesh. The book also indicates there are humans involved with these beings who form cults related to cannibalism for the purpose of transforming into these creatures.

These “goules” have an extraordinary ability to tunnel between our world and a vast underground cavern which apparently lies beneath a complete world, where some humans travel in dream. In our world, these tunnels emerge in graveyards.

Also, I have learned an offensive magic which causes the target’s flesh to twist and blacken.

*Yours in service to The Eight,*

*Roman.*

Father Dominic Lockwood  
Saint Mary's Catholic Church  
Toronto, Ontario

*This is a handwritten note but is completely  
nonsensical. Please tell the Keeper what language abilities  
you have.*



General Stapleton,

My reading of the Pnakotic Manuscripts will take some time to compete. Thus far, it seems to relate pre-human history and the activities of a race of beings who supposedly created all terrestrial life.

I will write to you again when I have made further progress.

Yours,

Sir Humphrey Amstead.

Seals a path or entrance against the minions of "The Great Ones" or "The Outer Gods," but does not protect against attack.

General Stapleton,

I have completed my reading of the Pnakotic Manuscripts will take some time to compete. It describes in detail pre-human history and the activities of a race of beings who supposedly created all terrestrial life, and instructs the reader in their written language.

It also contains the instructions for initiating contact with this race. I am uncertain if such ancient beings would still exist, as well as whether or not such an effort would be prudent.

Yours,

Sir Humphrey Amstead.

Harvard University, Cambridge Massachusetts



Boston Skyline 1934



Boston First Church of Christ Scientist 1934



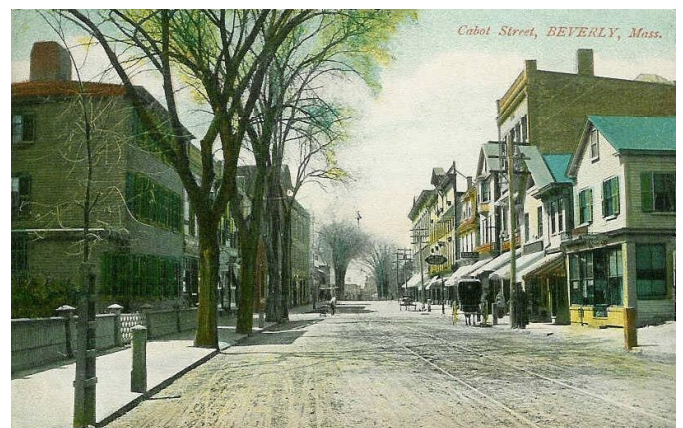
Boston Fleet of Rum Chasers 1934



Boston Flying Yankee Renamed Mountaineer



Beverly Cabot Street





Beverly Hospital Point Lighthouse Beverly



Beverly Soldiers Monument



San Francisco General Strike 1934



San Francisco Psychiatric Hospital



London Big Ben



London Kensington Palace



London Tower of London





## Metropolitan Museum of Art in New York City

Metropolitan Museum of Art in New York City



The Great Hall



Mummy



Psalter of Bonne of Luxemburg, by Jean\_Le\_Noir, 1348 Illuminated manuscript. The page illustrating Psalm 53, "The Fool Hath said in his heart, There is no God," shows a man drinking from a chalice, a typical attribute of the fool, signifying drunkenness.



## Biblioteca Nacional de España



## Madrid, Spain

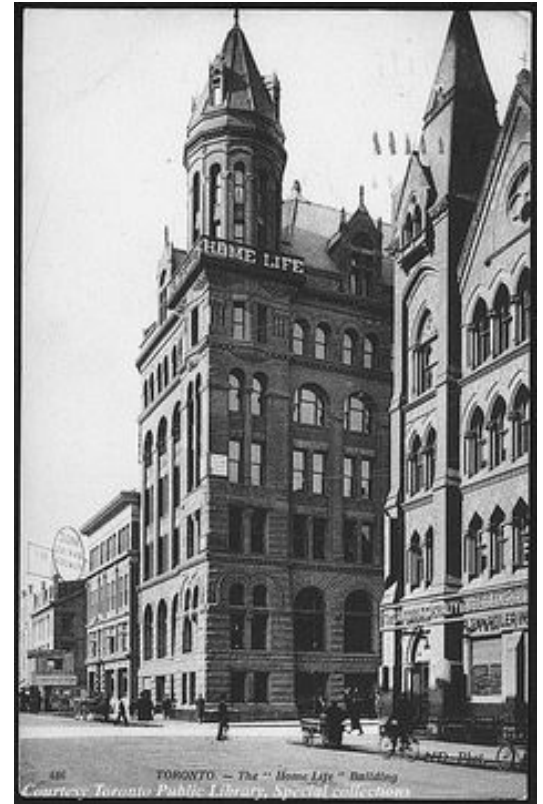




Toronto Bank of Commerce



Toronto Home Life Building



Canada Home Life Building and Osgoode Hall

